
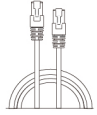
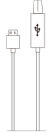
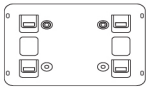

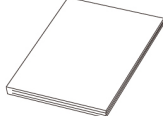
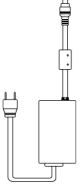

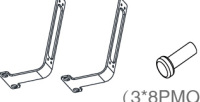



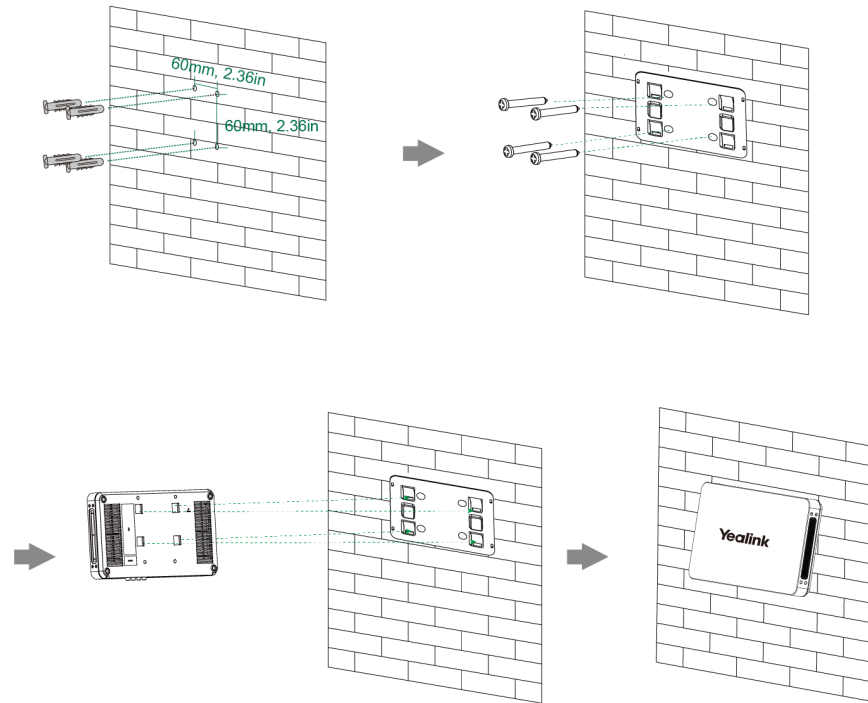
# AVHub Installation

## Package Contents

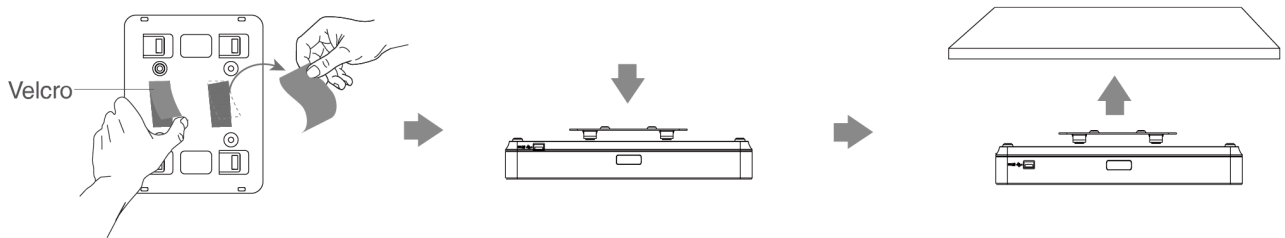
 AVHub	 CAT5e UTP (RJ45 - RJ45) Cable (7.5m, 24.60ft)	 USB 3.0 (A - B) Cable (2.5m, 8.20ft)	 Mounting Bracket (150*117*15mm)	 Velcro(x2) (W25.4*L50mm,3M)
 Quick Start Guide	 Power Adapter (48V/2A) (3.8m, 12.47ft)	 Cable Ties(x5) (20*200mm)	 Screw (x8) Mounting Ears (x2) (3*8PMOZN3+)	 Expansion Screw (x4) Machine Screw (x4) 6 * 30 mm, white, Polyamide 4*30 FAHOZN3+ (+)

## Installation

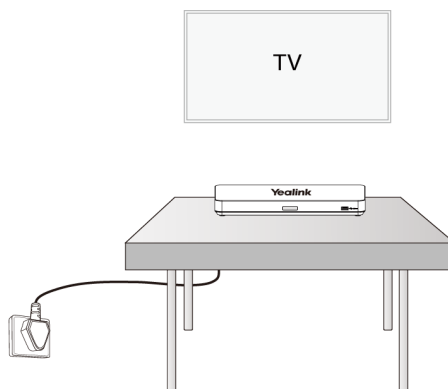
### Mount on the Wall



## Stick under the Table

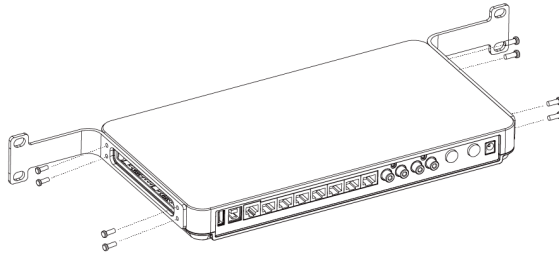


## Put on the Desk

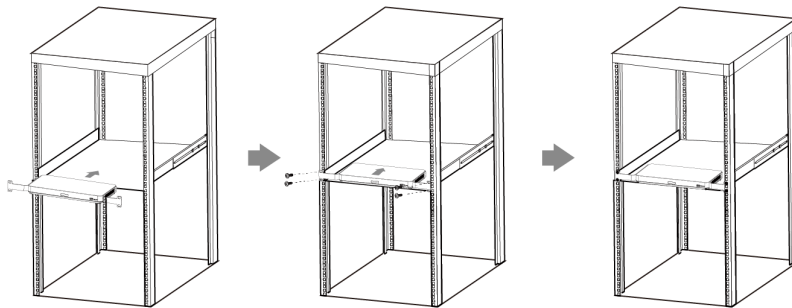


## Mount on the Rack

1. Install the mounting ears on both sides of the AVHub.



2. Push the AVHub into the rack, and then fix it to the rack with screws.



### **NOTE**

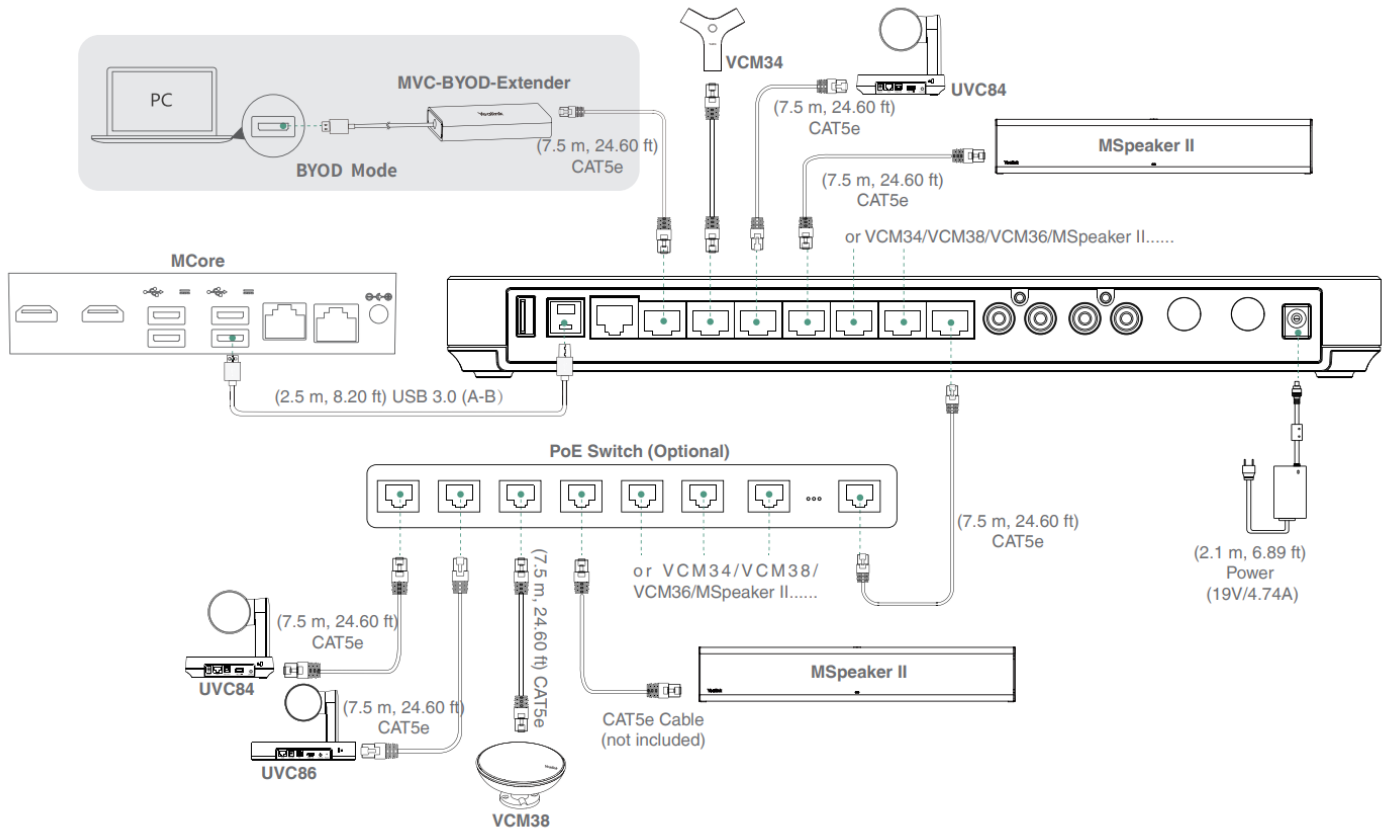
- The rack in which the AVHub will be placed must be a 19-inch Rack compliant with IEC 60297.
- The Package Contents do not include screws.

---

## Connection

When you connect the UVC84/UVC86 directly to the AVHub, the total number of connections must be no more than 4 devices. If the total number of connections exceeds 4 devices, you need to

connect a PoE switch (the PoE switch must meet the 802.3 AT (PoE+) standard).



**NOTE**

Not included accessories requirements:

- Ethernet cable: CAT5e or higher ethernet cable.
- PoE switch: If you use PoE to connect speakers or cameras, you need to use PoE+.