

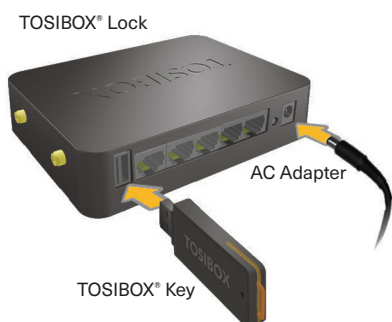
TOSIBOX

Lock 150 Quick Start Guide



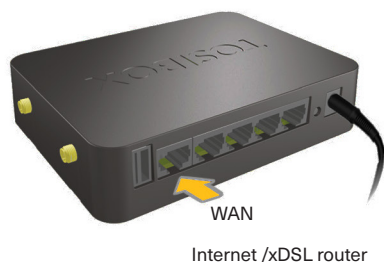
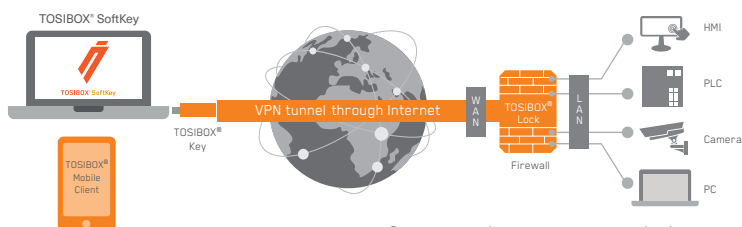
Copyright © Tosibox Oy, 2022

1 Matching the Lock with the Key



1. Connect the AC adapter to the Lock and wait for 2 minutes.
2. Insert the Key into the USB port of the Lock. When the LED on the Key stops blinking, (after approx. 10 seconds) the matching is complete and you can remove the Key from the USB port.
3. Go to **2a** if deploying into broadband networks (ethernet) or **2b** if deploying into mobile networks.

2a Deploying into Broadband Networks



1. Connect an Internet-connected ethernet cable to the Lock's WAN port.
2. Plug the devices into the Lock's LAN ports (LAN 1-3 or connect wirelessly via WLAN). If the devices have static IP addresses, please see Deploying the Lock in the TOSIBOX® user manual.

2b Deploying into Mobile Networks

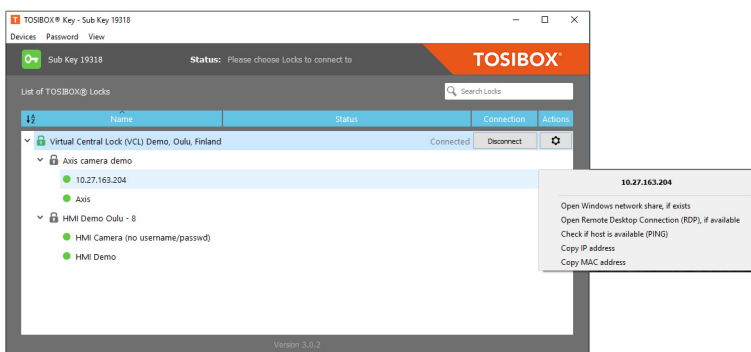



1. Connect a computer to the Lock's service port with an ethernet cable
2. Type <http://172.17.17.17> into your browser's address field to access the Lock's user interface. Log in using "admin" account. The password can be found on the bottom of the Lock. Select Network > USB modem and either use the Automatic APN setting or fill in the APN according to your mobile operator settings. Enter PIN code if necessary. Click Save.
3. Plug a supported USB modem into the USB port of the Lock.
4. Plug network devices into the Lock's LAN ports (LAN 1-3) or connect wirelessly via WLAN. See Deploying the Lock in the user manual for static IP configurations.
5. Verify on the status page of the Lock user interface that Internet connection is OK.




For more information and latest supported modem models, visit www.tosibox.com/support

3 Using the Key

Insert a TOSIBOX® Key into the USB port of your computer to install the Key software.



The TOSIBOX® Key user interface illustrated above shows all Lock devices serialized to the Key and the network devices connected to them. For more options click  or  icon.

-  The Lock is connected to the Internet and the Key is connected to the Lock.
-  The Lock is connected to the Internet, but the Key isn't connected to the Lock.
-  The Lock is not connected to the Internet.

DECLARATION OF CONFORMITY

Hereby, Tosibox Oy declares that the radio equipment type Lock 150 is in compliance with Directive 2014/53/EU. The full text of the EU declaration of conformity is available at www.tosibox.com/documentation-and-downloads

FEDERAL COMMUNICATION COMMISSION INTERFERENCE STATEMENT

This device complies with FCC part 15 of the FCC rules. Operation is subject to the following two conditions: (1) This device may not cause harmful interference, and (2) this device must accept any interference received, including interference that may cause undesired operation. FCC Caution: Any changes or modifications not expressly approved by the party responsible for compliance could void the user's authority to operate this equipment. This equipment should be installed and operated with a minimum distance of 20 cm between the antenna and the user or bystanders. FCC ID: 2AHCN-LOCK150 IC: 25009-LOCK150

This device is UL listed in USA and Canada with UL file number E507259.

INDUSTRY CANADA STATEMENT

This device complies with Industry Canada license-exempt RSS standard(s). Operation is subject to the following two conditions: (1) this device may not cause interference, and (2) this device must accept any interference, including interference that may cause undesired operation of the device. This radio transmitter IC: 25009-LOCK150 has been approved by ISED to operate with the antenna types listed below with the maximum permissible gain indicated. Antenna types not included in this list, having a gain greater than the maximum gain indicated for that type, are strictly prohibited for use with this device. Lock 150: Wi-Fi monopole antenna max peak gain 2.0 dBi. Under ISED regulations, this radio transmitter may only operate using an antenna of a type and maximum (or lesser) gain approved for the transmitter by ISED. To reduce potential radio interference to other users, the antenna type and its gain should be so chosen that the equivalent isotropically radiated power (e.i.r.p.) is not more than that necessary for successful communication! This equipment should be installed and operated with a minimum distance of 20 cm between the antenna and the user or bystanders.



Patented, incl. US8831020, US9900178, US14/119753, US14/39015

Visit Support, download user manual
<https://helpdesk.tosibox.com/>