



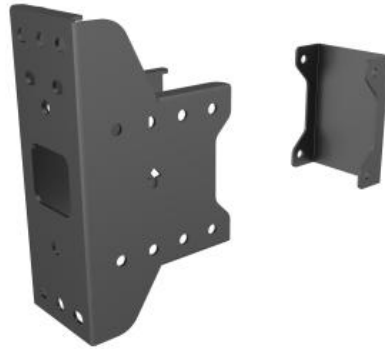
Ready when you are

M Pro Series - Back to back display plate from wall

Article: 7 350 073 737 345

M Pro Series – Back to back display plate from wall - Part for Pro Series, steel, mounts to wall and rail - black

Product category: PRO SERIES



Specification

M Pro Series - Back to back display plate from wall

Article No:	7 350 073 737 345
Type:	Part for M Pro Series
Material:	Steel
Color:	Black
Surface Finish:	Powder coating
Weight:	1.0 kg
Measurements	225.2x134x85 mm
Max Load:	50 kg
Installation:	Mount to wall
Warranty:	5 years

Please note: Multibrackets products and specifications are in constant change.

View the latest specifications, drawings and images for this product on www.multibrackets.com/7345