



XE52-120-TX / XE62-120-TX Web Smart EPoC IPTX Adapter

Quick Installation Guide

P/N: A625006200G

INTRODUCTION

Model	Description
XE52-120-TX	EPoC IPTX Adapter, 1x EPoC BNC, 1x FE RJ45, 1 DC Jack, -20°C~60°C
XE62-120-TX	EPoC Outdoor IPTX Adapter, 1x EPoC BNC, 1x FE RJ45, -30°C~60°C

PACKAGE CONTENTS

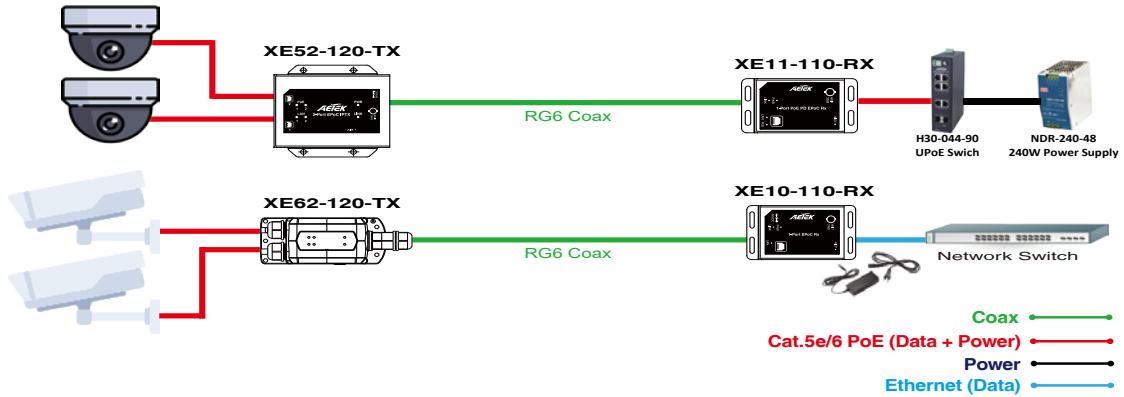
* 1x Quick Installation Guide	* Waterproof Connect (XE62-120-TX only)
-------------------------------	---

⚠ IMPORTANT:

1. Use CAT5e or CAT6 UTP/STP cables, and coaxial cable.
2. Please avoid using low quality cables, which will seriously limit the cabling distance and power delivery.
3. Make sure the power source is sufficient for your configuration.

CONNECTION

Application :



DEFAULTS

IP Address	DHCP client
------------	-------------

Account / Password

The device contains a security feature that requires a user to generate a new means of authentication before access is granted to the device for the first time.

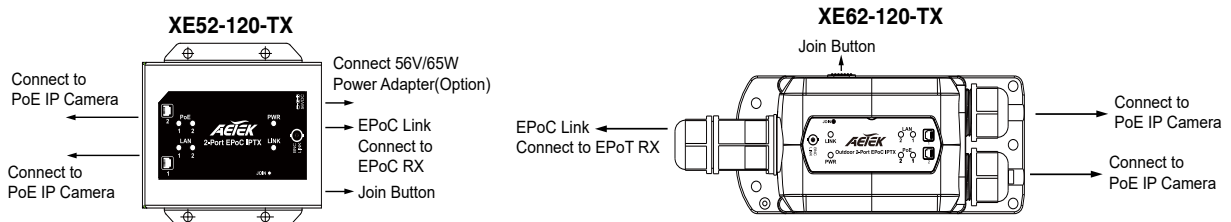
Username

New password

New password confirm

The first time login need key in new username and password, please enter the new username and password, and then click the <Apply> button.

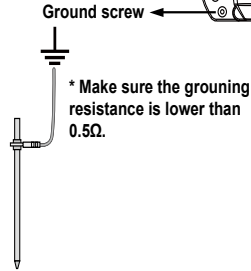
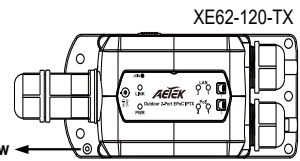
INSTALLATION



IMPORTANT:

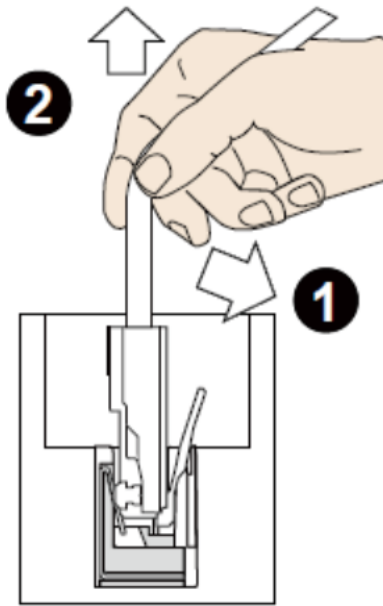
NOTE:

The XE62-120-TX Outdoor EPoC Adapter must be grounded using a ground wire between the ground screw and earth ground.



Outdoor LAN Port

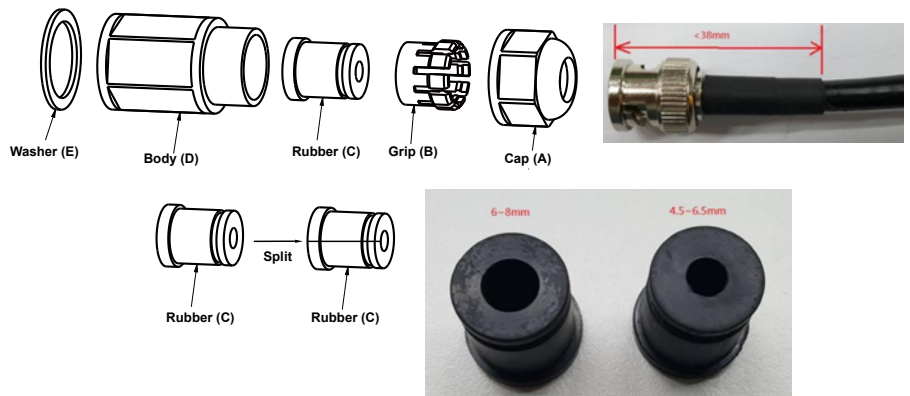
To disconnect a LAN cable, loosen the cable gland and pull the cable against the socket wall towards the side of the locking tab.



Outdoor EPoC LINK Port Connector Assembly

IMPORTANT -

1. Fit a BNC plug to the coaxial cable
2. Thread the coaxial cable through the cap(A) & grip(B)
3. Split rubber(C), rubber have two sizes for meet 4.5~6.5mm or 6~8mm coaxial cable.
4. Fit the split rubber(C) over the coaxial cable
5. Thread the coaxial cable through the body(D)
6. Fit the washer(E) to the XE62-120-TX connector
7. Plug the BNC connector on the coaxial cable into the XE62-120-TX
8. Hold XE62-120-TX and then screw the body(D) onto the XE62-120-TX connector tighten firmly
9. Push rubber(C) in the grip(B) and screw the cap tighten firmly. The coaxial cable is sealed when the rubber(C) & grip(B) bulges to the edge of the cap(A). The BNC Male connector needs <38mm form coaxial cable.



Distance/Power Chart

Length of Coaxial Cable	
300m	34.72W
500m	25.2W
800m	13.11W
1000m	10W
1200m	9.66W
1200m ~ 2400m	Data only (100Mbps)

NOTE:

1. The numberts comply using RG6 coaxial cables.
2. The length of network cable for camera connection is 1m CAT5e cable.
3. The power delivery will vary on the quality of coaxial cable due to resistance.

LEDs

PoE	Yellow ON	PoE: Power port is connected to PD
LAN	Green flash	LAN: Data is being transmitted or received.
	OFF	No connection
PWR	Yellow ON	Power is supplied
LINK	Green ON	Rx and Tx EPoC adapter is connected.

Mode/Reset Button

Reset to default	15 seconds
------------------	------------

Join Button

- Press the Join button for 1-3 seconds on both Local and Remote Extenders to Link them.
- Press the Join button on the Remote Extender for 5-8 seconds to disconnect the Link between the Extenders
- Press the Join button for 10~15 seconds to reset the Extender to default.

All specifications are subject to change without notice.
Copyright © 2020 AETEK INC. All rights reserved.