

MANUAL

# CONTROL BOX -ER-

*Draper Control Box Enhanced Radio*

*211030-ER*

Tack för att ni valt en produkt från Draper Europe AB. Vi hoppas den kan ge er lång tids nytta. Läs igenom hela manualen innan installation och användning. Behåll detta dokument för framtida bruk.

*Svenska* →

**WARNING:** Installationen måste utföras av behörig elektriker!

---

Thank you for choosing a product from Draper Europe AB. We hope it will bring you great usage for long time. Please read through the manual completely before installation and usage. Keep this document for future reference.

*English* →

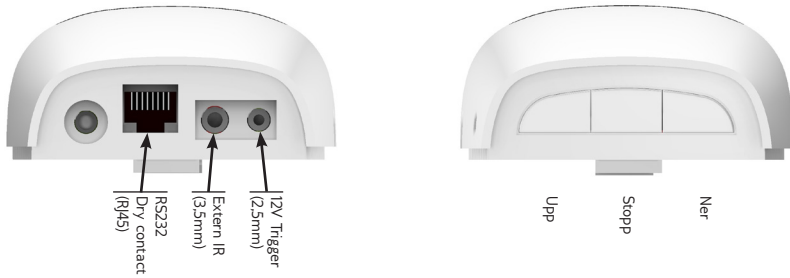
**CAUTION:** The installation must be wired and connected by a certified electrician!

# EGENSKAPER

## Egenskaper

Strömförsörjning AC 230V/50Hz  
Uteffekt 300W  
Arbetstemperatur -10 C - +65 Cvv

- Kan kontrolleras av:
- RS232
  - IR (internt och externt IR-öga) För IR-fjärrkontroll
  - RF 433,92 MHz +/- 100 kHz 35-50 meter räckvidd
  - 12VDC trigger
  - Dry contact / Contact closure (ex. reläslutningar)



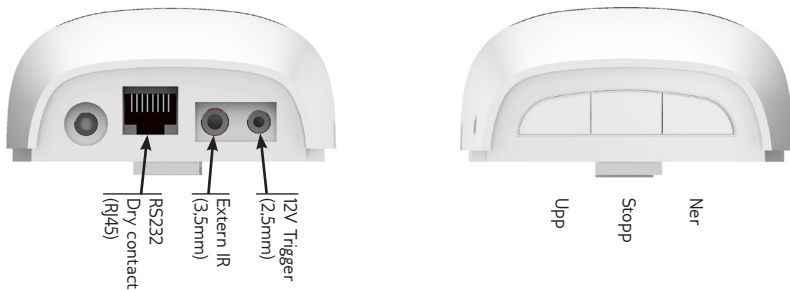
---

# CHARACTERISTICS

## Features

Input voltage AC 230V/50Hz  
Rated Power 300W  
Working temperature -10 C - +65 Cvv

- Can be controlled by:
- RS232
  - IR (internal and external IR-eye) For IR-remote control
  - RF 433,92 MHz +/- 100 kHz 35-50 meters range
  - 12VDC trigger
  - Dry contact / Contact closure



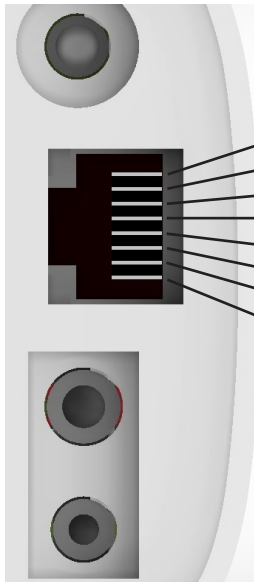
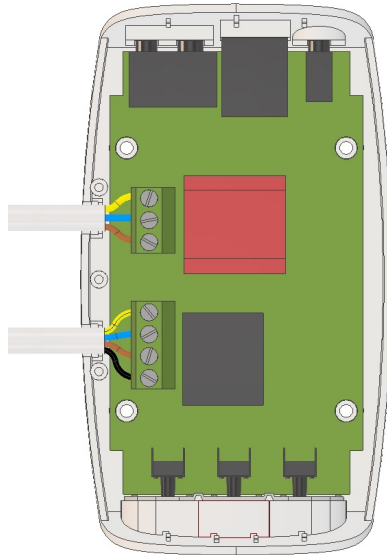
# INSTALLATION

## Strömförsörjning / Power connection

- E (Earth/Jord): Grön-gul/Green-yellow
- N (Neutral): Blå/Blue
- L (Fas/Phase): Brun/Brown

## Motorkabel / Motor cable

- E (Earth/Jord): Grön-gul/Green-yellow
- N (Neutral): Blå/Blue
- D (Down): Brun/Brown
- U (Up): Svart/Black



### RI45

1. Reserve
2. RS232 TX
3. Dry contact DOWN
4. Dry contact UP
5. Dry contact STOP
6. GND
7. RS232 RX
8. Reserve

### RS232 COMMUNICATION

UP: 55 FE FE 03 01 B9 24  
 STOP: 55 FE FE 03 03 38 E5  
 DOWN: 55 FE FE 03 02 F9 25

Baud rate: 9600  
 Stop bits: 1  
 Data length: 8  
 Parity check: None  
 Flow control: None

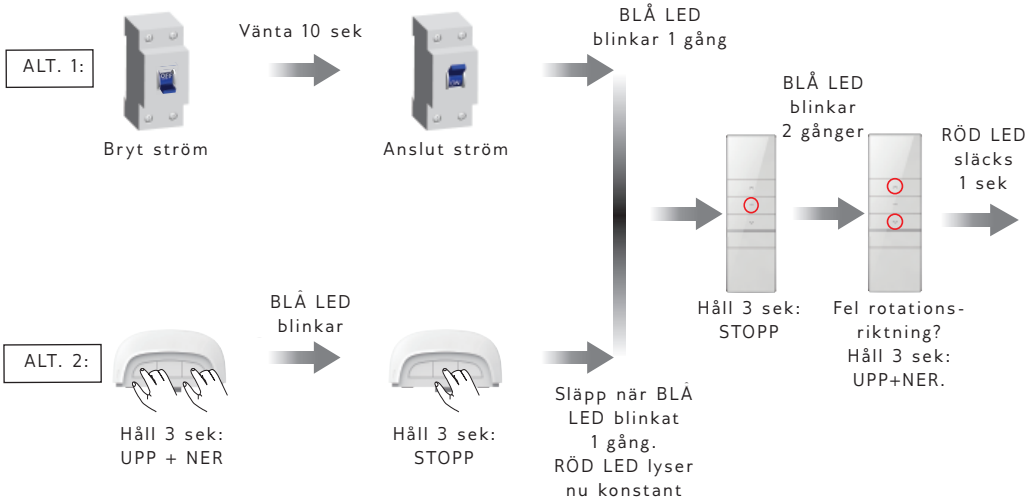
# PROGRAMMERING

LÄGGA TILL FJÄRRKONTROLL OCH VÄLJA ROTATIONSRIKTNING



**OBS!!! MAX 10 SEKUNDER MELLAN TVÅ KOMMANDON FÖR ATT DET SKA BLI BEKRÄFTAT.**

**NOTERA: UPPREPA SAMMA PROCEDUR FÖR ATT TA BORT FJÄRRKONTROLL.**



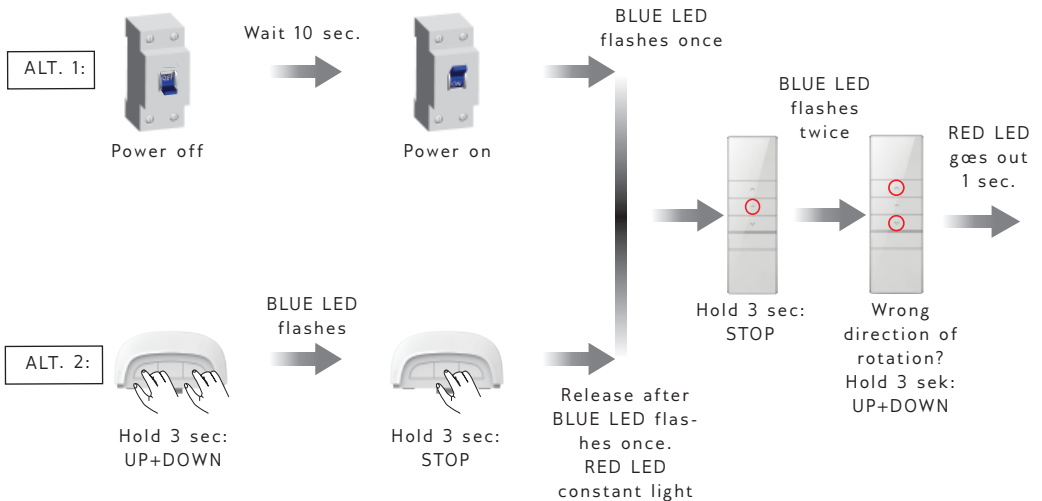
# PROGRAMMING

ADD REMOTE CONTROL AND CHOOSE DIRECTION OF ROTATION



**OBS!!! MAX 10 SECONDS BETWEEN TWO COMMANDS TO CONFIRM PROGRAMMING.**

**NOTE: REPEAT SAME PROCEDURE TO DELETE REMOTE CONTROL.**

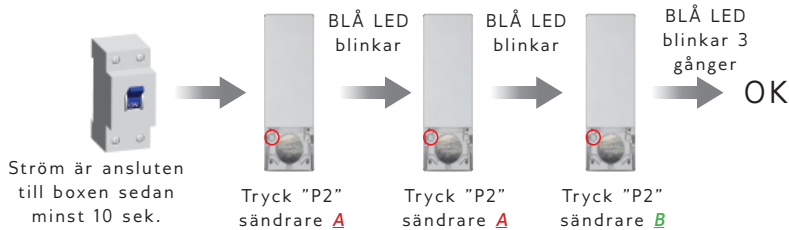


## LÄGGA TILL/TA BORT SÄNDARE

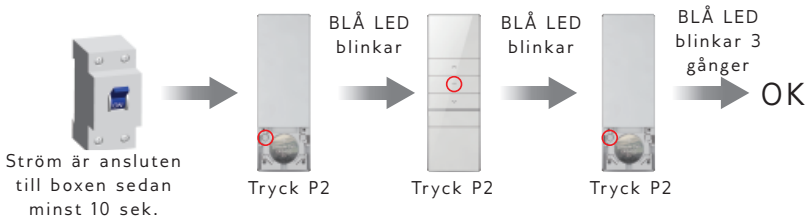
**OBSERVERA:** FJÄRRKONTROLL **A** MÅSTE REDAN VARA INPROGRAMMERAD I KONTROLLBOXEN!

**NOTERA:** EXTRA SÄNDARE KAN VARA FJÄRRKONTROLL, SENSOR ELLER "AUTOLINK TRIGGER".

**NOTERA:** UPPREPA SAMMA PROCEDUR FÖR ATT TA BORT FJÄRRKONTROLL **B**.



## RADERA ALLA SÄNDARE



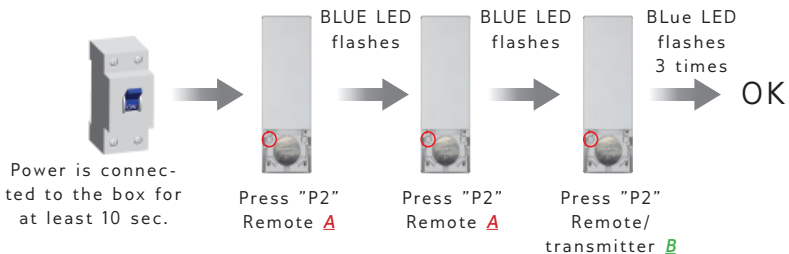
---

## ADD/DELETE TRANSMITTER

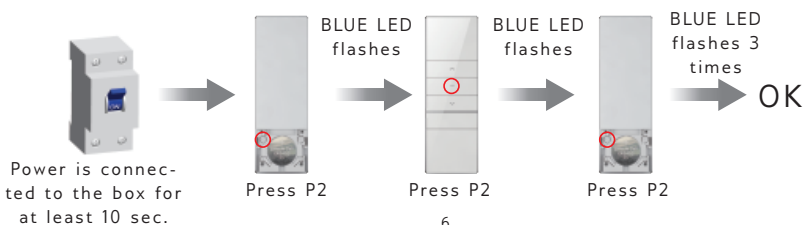
**OBS!!!** REMOTE CONTROL **A** MUST ALREADY BE PROGRAMMED INTO THE BOX!

**NOTE:** EXTRA TRANSMITTER CAN BE A REMOTE CONTROL, SENSOR OR "AUTOLINK TRIGGER".

**NOTE:** NOTE: REPEAT SAME PROCEDUR TO DELETE REMOTE CONTROL **B**.

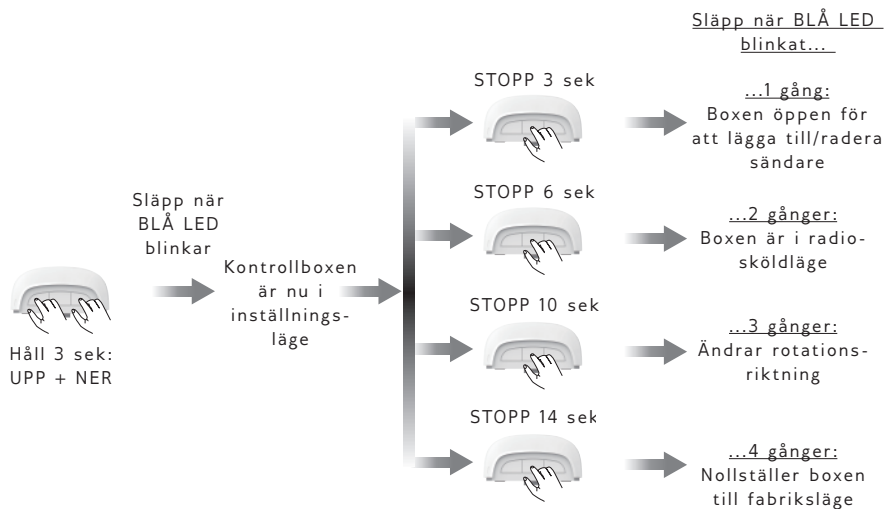


## DELETE ALL TRANSMITTERS



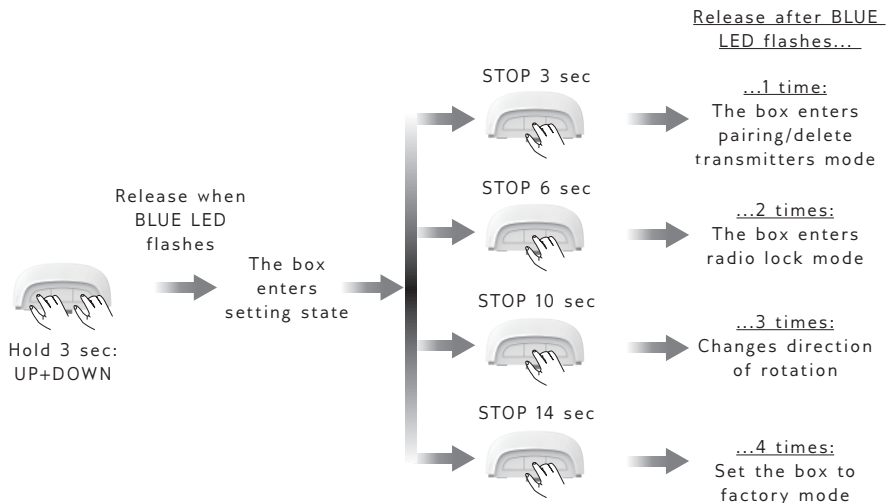
## TILLÄGGSFUNKTIONER

**OBS!!! MAX 10 SEKUNDER MELLAN TVÅ KOMMANDON FÖR ATT DET SKA BLI BEKRÄFTAT. FÖR ATT KOMMA UR RADIOSKÖDLÄGET, TRYCK PÅ VALFRI KNAPP PÅ BOXEN**



## ADDITIONAL FUNCTIONS

**OBS!!! MAX 10 SECONDS BETWEEN TWO COMMANDS TO CONFIRM PROGRAMMING. TO EXIT THE RADIO LOCK STATE, PRESS ANY BUTTON ON THE BOX.**



WWW.DRAPEREUROPE.SE  
INFO@DRAPEREUROPE.SE

